



Finanziato
dall'Unione europea
NextGenerationEU



Ministero
dell'Università
e della Ricerca



Italiadomani
PIANO NAZIONALE
DI RIPRESA E RESILIENZA



Università degli Studi
"Gabriele d'Annunzio"
Chieti – Pescara

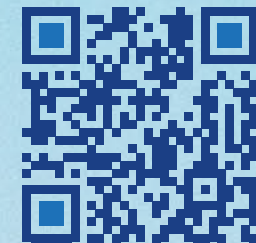
PRIN 2022 PNRR - SUST.FU.ToUR - The future of sustainability

Towards
**a HOLISTIC
UNDERSTANDING
of SOCIETY:**

BRIDGING
*Social Sciences, Statistics
and Computational Sciences*

DSSR
2025
PESCARA

19TH-21ST FEBRUARY



19th of February, Wednesday

ROOM 31	ROOM 33	ROOM 35	ROOM 27
11:00-11:30 Institutional Greetings			
11:30-12:30 CON-1: Advances in economics	CON-2: Tourism Preferences, Impact and Trends	CON-3: Territory and Society	
12:30-13:30 Lunch - Room 28			
13:30-14:30 INV-1: Methodological and Institutional design for the development of the Mid Adriatic Hipercity metropolitan area	INV-2: Social Data Science, Artificial Intelligence, and Social Change	INV-3: Identifying and Counteracting Online Misogyny in Cyberspace (ICOMIC Project)	
14:30-15:30 INV-4: Advanced Clustering and Multilevel Analysis Techniques for Complex Data	INV-5: Scientific Knowledge Analysis in Health	INV-6: Social Data Science, Artificial Intelligence, and Social Change	INV-7: Data sciences for socio-territorial indicators
15:30-16:00 Coffee break - Room 28			
16:00-17:15 Round Table: AI and the Future of Social Research: Epistemological, Methodological, and Ethical Insights			
17:15-18:30 INV-8: Resilience as a mental view on future	INV-9: Data Integration in Social research: Leveraging New and Traditional Sources for a Complex Future	INV-10: Complex Environmental Processes and Modeling of Compound Events (PRIN PNRR 2022 SLIDE)	INV-11: Research on Information and Computational Economics (RICE)

20th of February, Thursday

09:00-10:00 INV-12: Exploring Futures: Approaches, Methodologies, and Visualizations for Scenario Development	INV-13: Advanced models for financial data and risk assessment	INV-14: Measuring and Modelling Violence Against Women: Innovative Strategies for Data Analysis	INV-15: Student mobility and inequalities in higher education
10:00-10:30 Coffee break - Room 28			
10:30-11:30 INV-16: Causal inference approaches to study health and wellbeing	INV-17: Methods and Models for Educational Data	INV-18: Data science and AI for healthcare services	INV-19: Functional data analysis
11:30-12:30 Plenary session 1: Federico A. LASCO. <i>Preferenze virtuali, mobilità vincolate, esperienze reali: aspettative, rendite e catena del valore nel futuro del turismo. Le politiche fanno la differenza?</i>			
12:30-13:30 Lunch - Room 28			
13:30-14:30 Plenary session 2: Stefano M. IACUS. <i>Rethinking Scale: The Efficacy of Fine-Tuned Open-Source LLMs in Large-Scale Reproducible Social Science Research</i>			
14:30-15:30 INV-20: Futures Research Methodology: Models and Applications for Sustainable Tourism (PRIN 2022 PNRR - SUST.FU.ToUR)	INV-21: Co-authorship networks: challenges in data collection and statistical modelling.	INV-22: Sustainable and circular management of Italian waste sector in the framework of the National Recovery and Resilience Plan (PRIN 2022 PNRR - C.E.Ma. Si.P. Project)	INV-23: Methodological Challenges and Insights in Researching People's Relationship with Artificial Intelligence
15:30-16:30 INV-24: Researching with/about AI	INV-25: Environmental attitudes, behaviors, and awareness in Italy	CON-4: Advances and Applications of NLP Techniques	INV-26: Statistical methods for socio-economic applications

21st of February, Friday

10:00-11:00 INV-27: Identification of Online Racism and Xenophobia (PRIN PNRR 2022 TOLERANT)(1)	INV-28: New approaches and measures to address changing society	INV-29: Environmental Modelling and Complex Data Integration (PRIN 2022 CoEnv)	INV-30: Data-Driven Approaches to Financial Integrity and Local Governance: Case Studies and Insights
11:00-11:30 Coffee break - Room 28			
11:30-13:00 Round Table: AI@work			
13:00-14:00 Lunch - Room 28			
14:00-15:00 INV-31: Identification of Online Racism and Xenophobia (PRIN PNRR 2022 TOLERANT)(2)	INV-32: Methods and Applications for Complex Data	INV-33: Advanced Data Analytics in Socio-Economic Indicators	INV-34: Socio-economic perspectives for a sustainable future
15:00-16:00 CON-5: Health Models, Literacy, and Food Deprivation	CON-6: Smart Living and Social Surveys	CON-7: Social Media Analytics	
16:00-16:30 Greetings			
16:30 Networking Aperitif			

